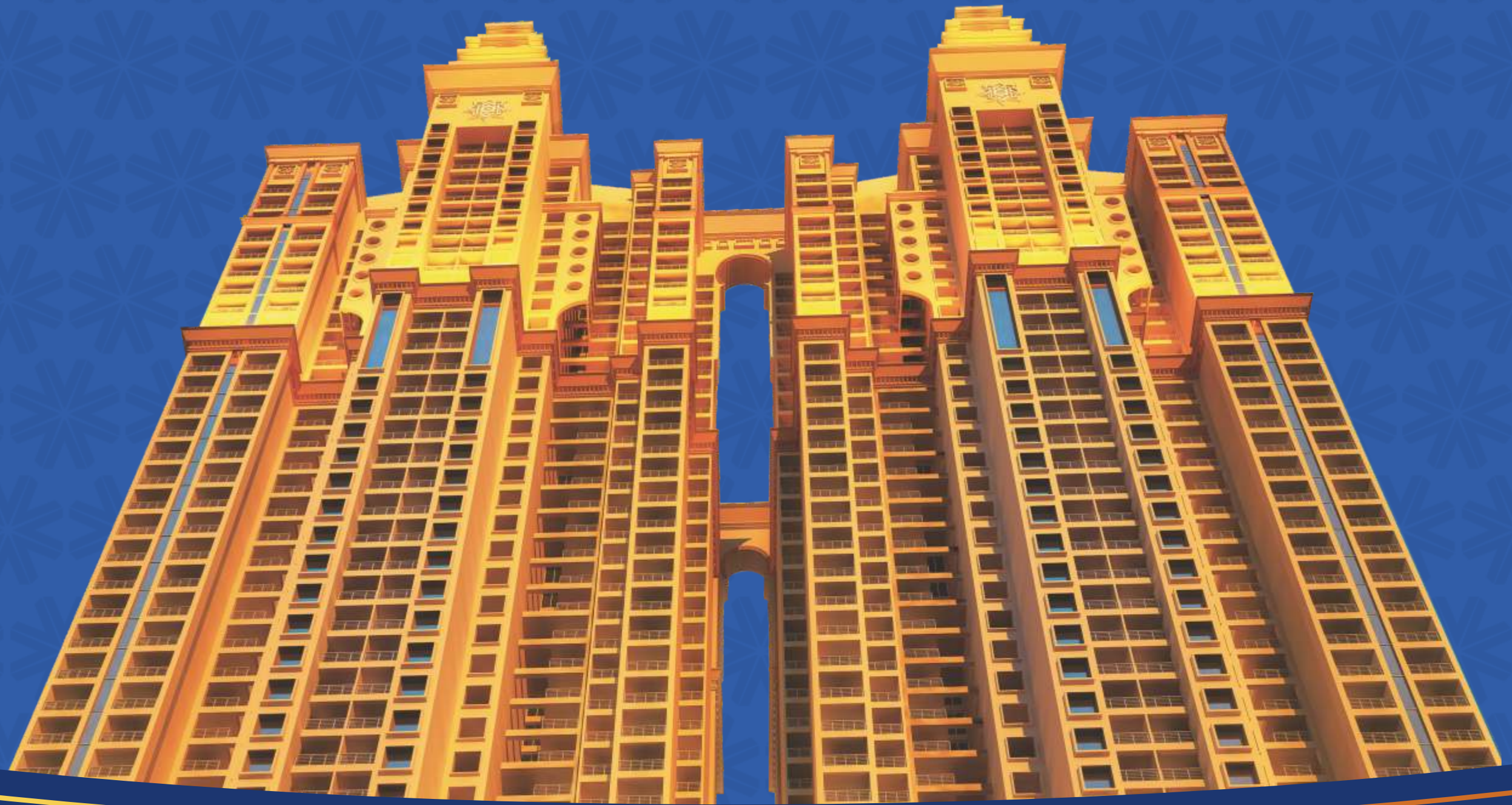


# ARIHANT CLAN AALISHAN — KHARGHAR —

BIG-SIZED STUDIO, 1, 2 & 3 BHK RESIDENCES



 *A Lifestyle Project*



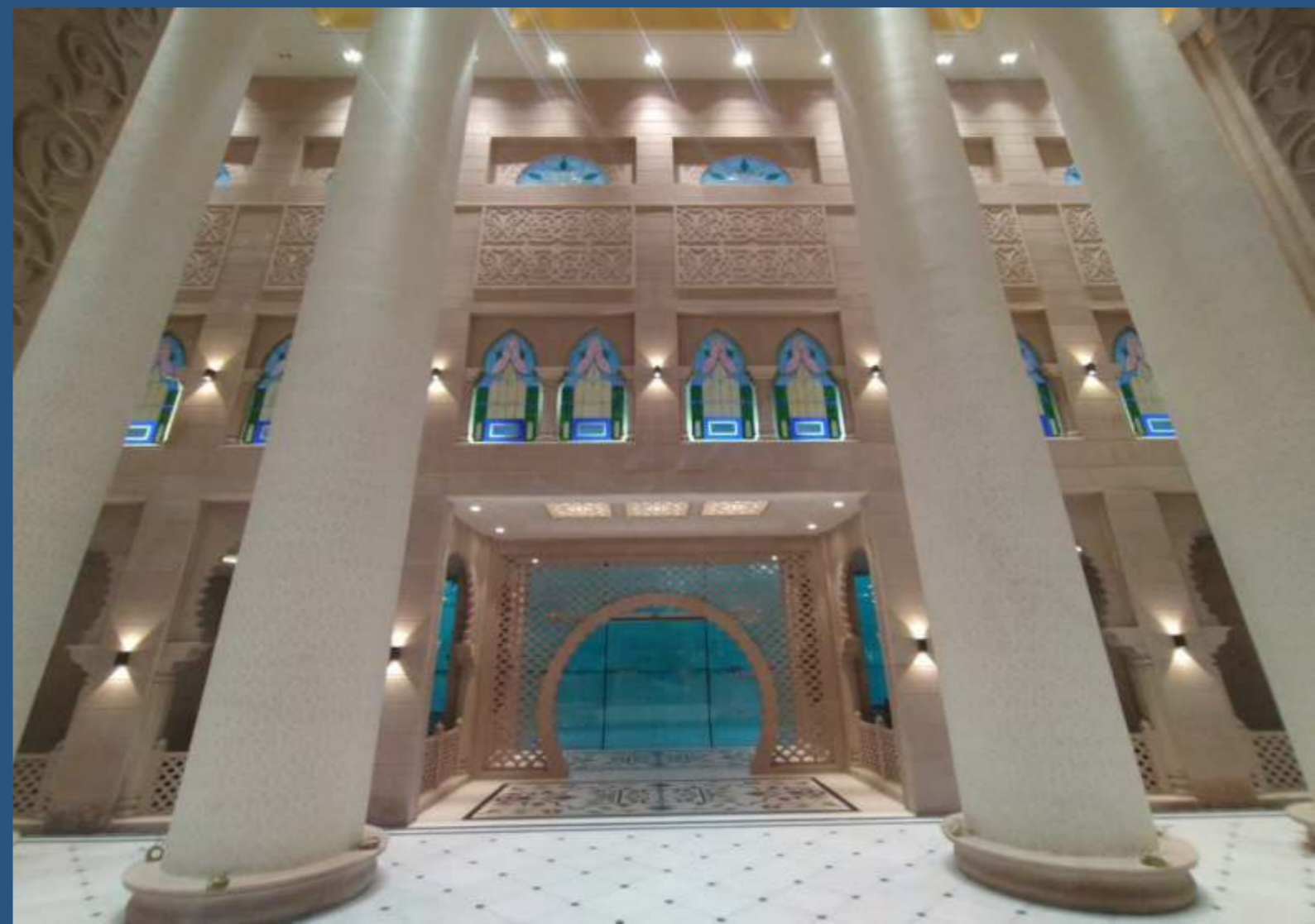
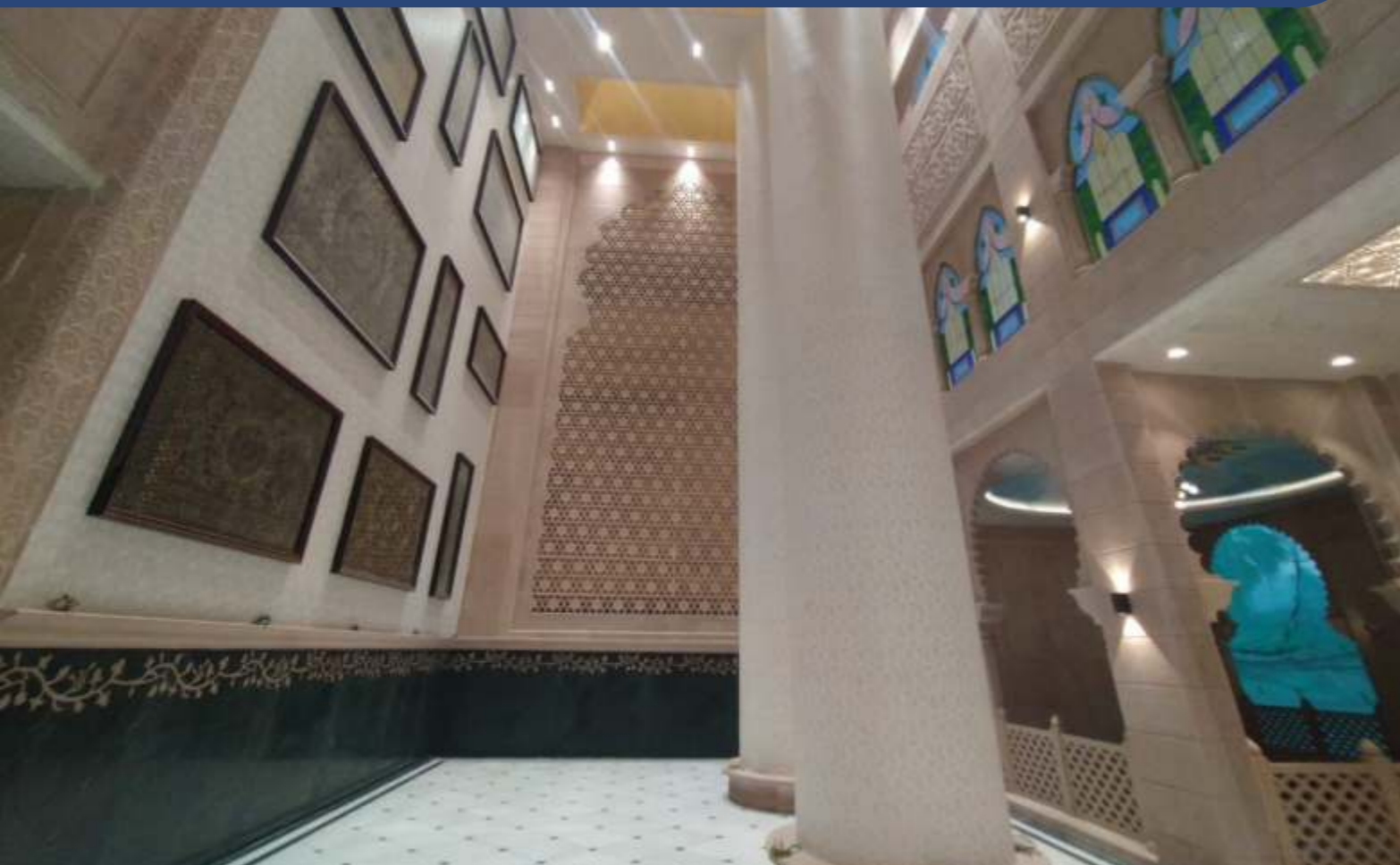


**BARAZ 1 & 2 - 2 TOWERS OF 53 STOREYS**

**KAVEH - 37 STOREY TOWER**

**ZEENAT - 51 STOREY TOWER**

AAYAT - ROYAL ENTRANCE LOBBY (Actual images)



# KOLUP - GRAND CLUBHOUSE



# PAIRI DAEZA - LANDSCAPED GARDENS



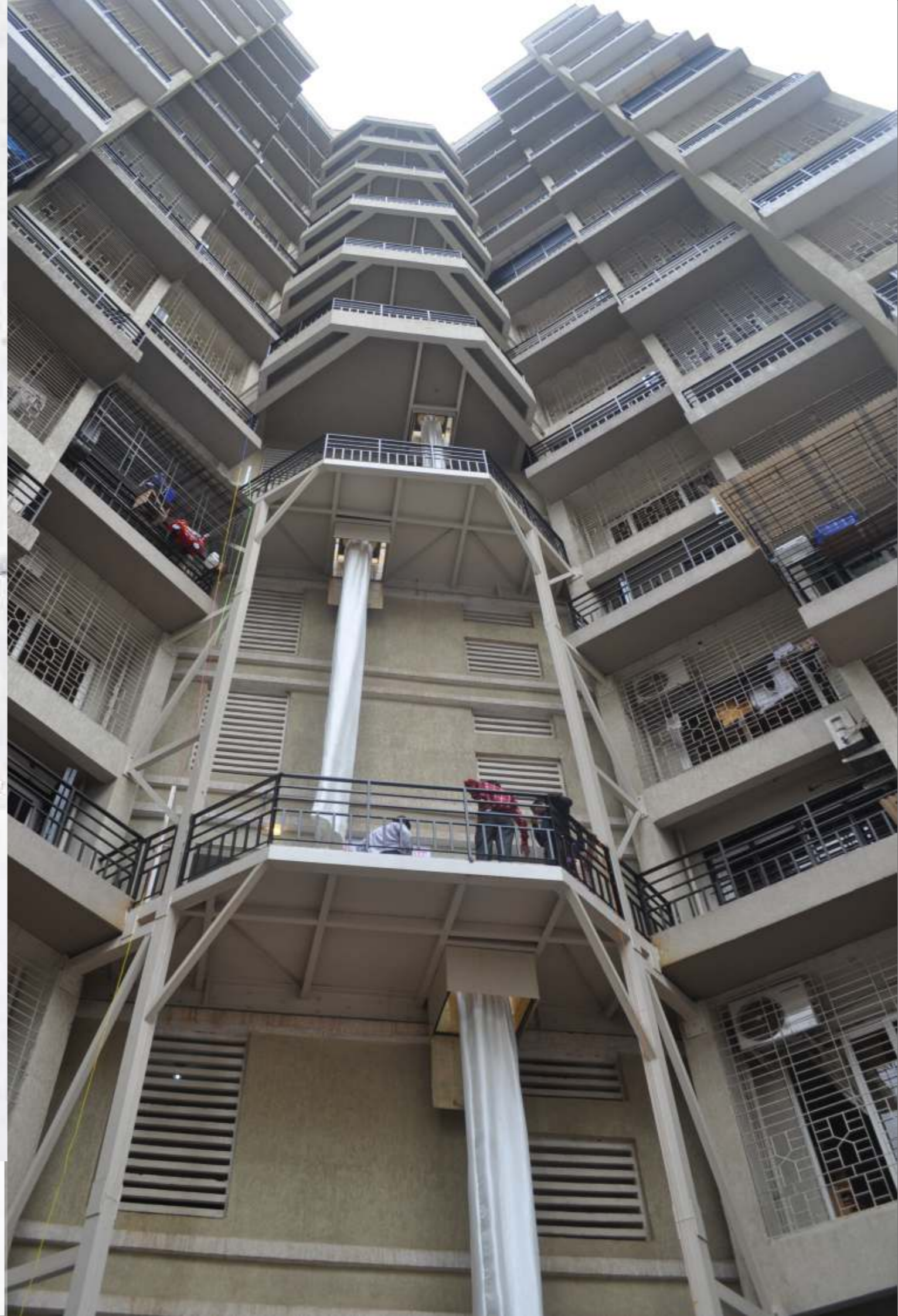






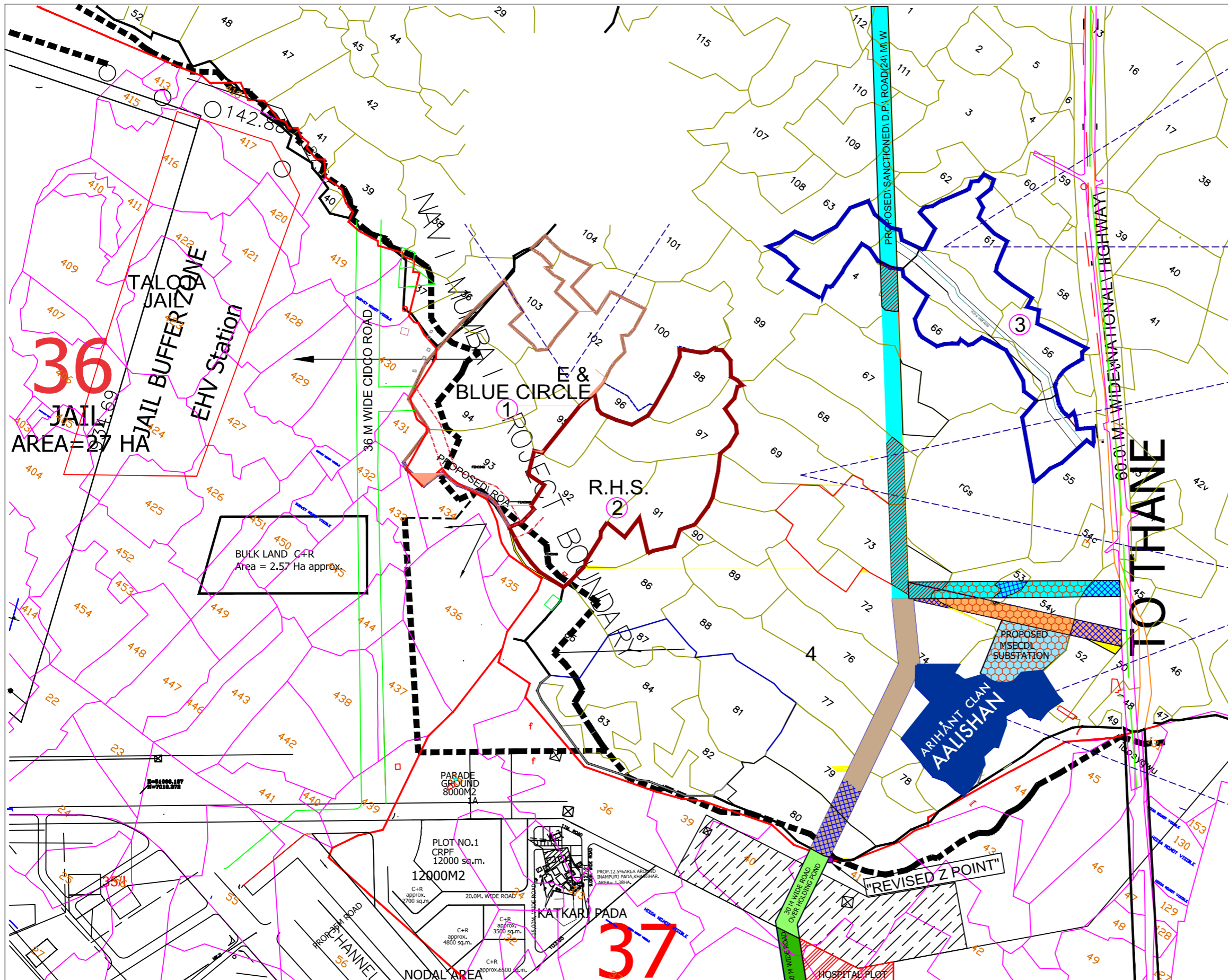


# FIRE ESCAPE CHUTE



# BUS DUCT SYSTEM





- 1) Total Water Demand  
1.92 MLD
- 2) Total Drainage Out flow  
1.719 MLD
- 3) Total Storm Water Outflow  
6600 m/hr
- 4) Electrical load  
Connected load = 42.00 MW  
Demand load = 19.50 MW
- 5) Waste Management  
Dry Waste = 4153.60 kg/day  
Wet Waste = 6230.40 kg/day

- 1) Total Water Demand  
4.214 MLD
- 2) Total Drainage Out flow  
3.685 MLD
- 3) Total Storm Water Outflow  
131241.16 m/hr
- 4) Electrical load  
Connected load = 40.99 MW  
Demand load = 32.79 MW
- 5) Waste Management  
Dry Waste = 6303.00 kg/day  
Wet Waste = 14616.00 kg/day

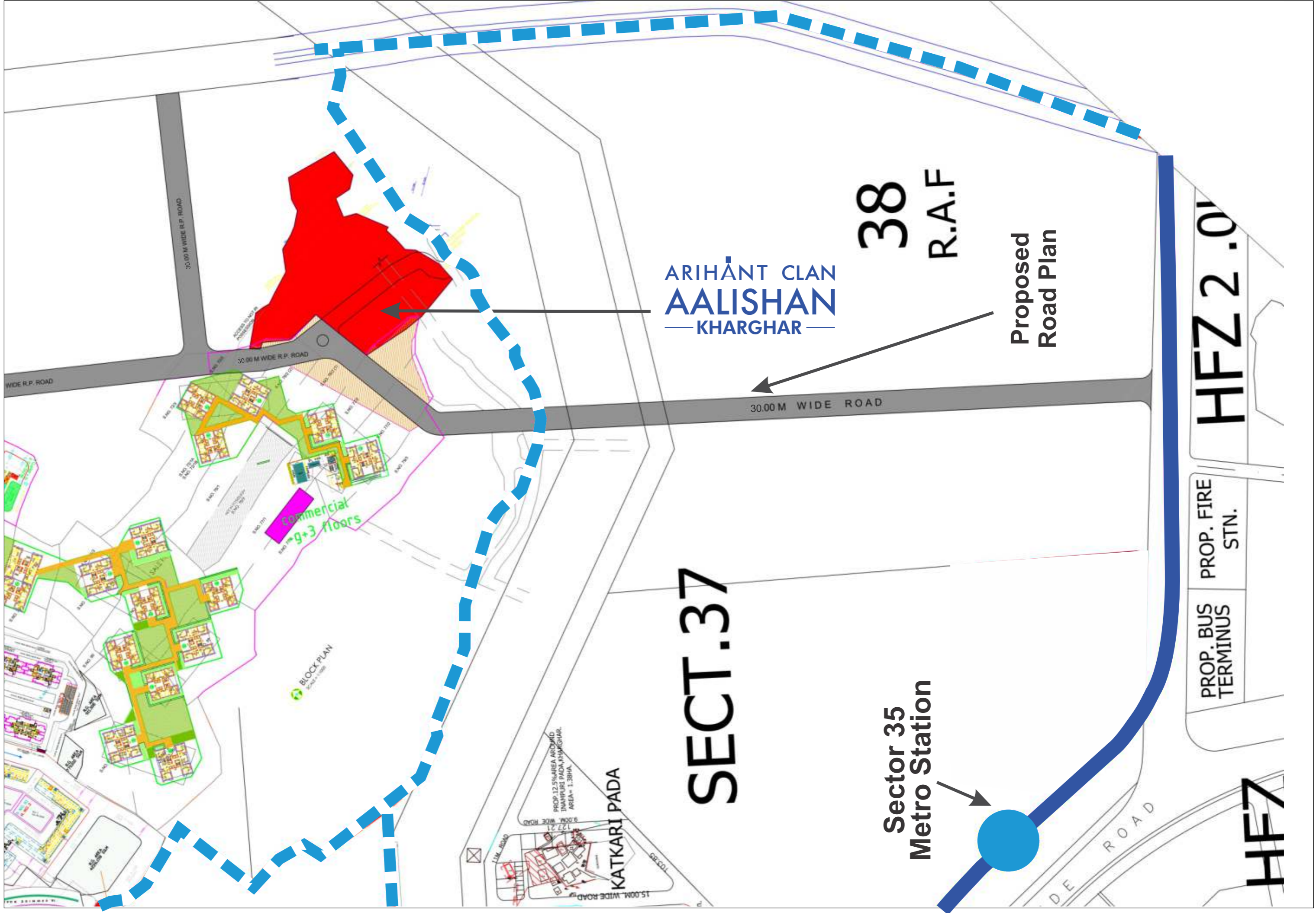
- 1) Total Water Demand  
0.928 MLD
- 2) Total Drainage Out flow  
0.789 MLD
- 3) Total Storm Water Outflow  
4238.00 m/hr
- 4) Electrical load  
Connected load = 14.48 MW  
Demand load = 5.21 MW
- 5) Waste Management  
Dry Waste = 1350.20 kg/day  
Wet Waste = 2025.30 kg/day

LEGEND:-



**ARIHANT CLAN  
AALISHAN**

- |   |                                  |                                  |                                 |
|---|----------------------------------|----------------------------------|---------------------------------|
| SANCTIONED D.P. ROAD (24 M WIDE)          | HOSPITAL PLOT                    | REVISED Z POINT                  | LAND TO BE ACQUIRED (TRUST)     |
| EXTENDED D.P. ROAD                        | CIDCO ROAD 30 M WIDE             | 30 M WIDE ROAD OVER HOLDING POND | LAND TO BE ACQUIRED (PRIVATE)   |
| REVISED ALIGNMENT OF SANCTIONED D.P. ROAD | PROPOSED MSEC DL SUBSTATION LAND | HOLDING POND                     | LAND TO BE ACQUIRED (GURCHARAN) |



ARIHANT CLAN  
**AALISHAN**  
— KHARGHAR —

**38**  
R.A.F.

Proposed  
Road Plan

30.00 M WIDE ROAD

**SECT.37**

Sector 35  
Metro Station

**HFZ 2.0**

PROP. FIRE  
STN.  
PROP. BUS  
TERMINUS

**HF7**

KATKARI PADA

BLOCK PLAN

commercial  
~9+3 floors

30.00 M WIDE R.P. ROAD

30.00 M WIDE R.P. ROAD

WIDE R.P. ROAD

DE ROAD

PROP. 12 SIKHARA ARCHITECT  
INDEPENDENT PADA, KHARGHAR.  
AREA = 1.38HA.  
127/21  
3.20M WIDE ROAD

15.00M WIDE ROAD

GRECO

1/4 ROAD

45.00

45.00

45.00

45.00

45.00

45.00

45.00

45.00

45.00

45.00

45.00

45.00

45.00

45.00

45.00

45.00

45.00

45.00

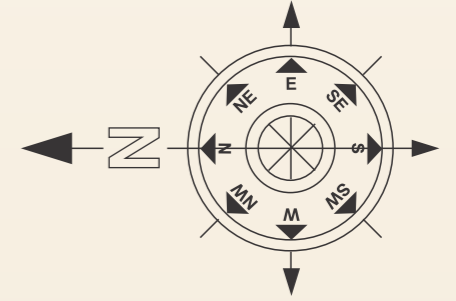
45.00

45.00

45.00

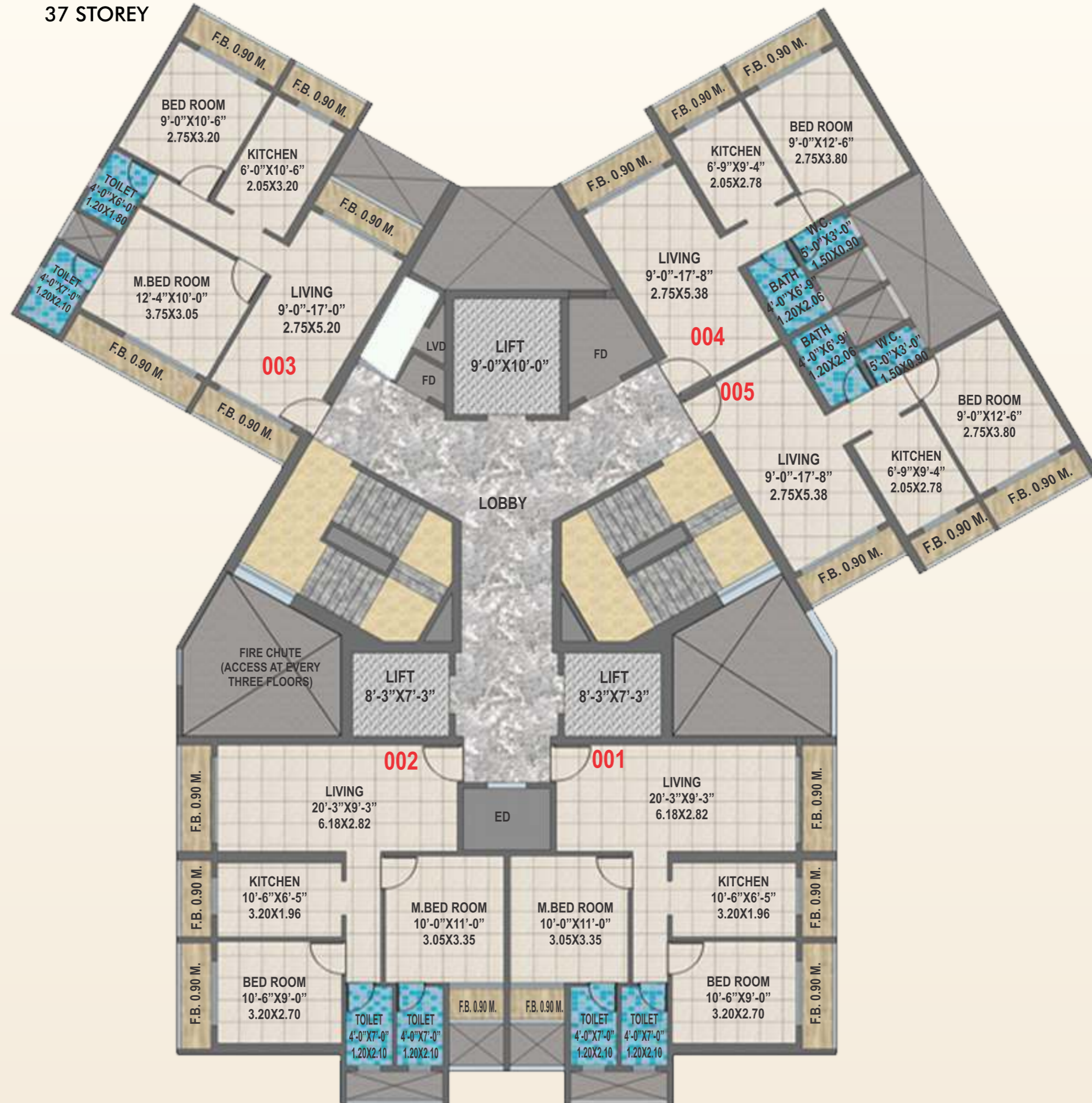
45.00

# MASTER LAYOUT



# TYPICAL FLOOR PLAN - KAVEH

37 STOREY



# 1 BHK UNIT PLAN





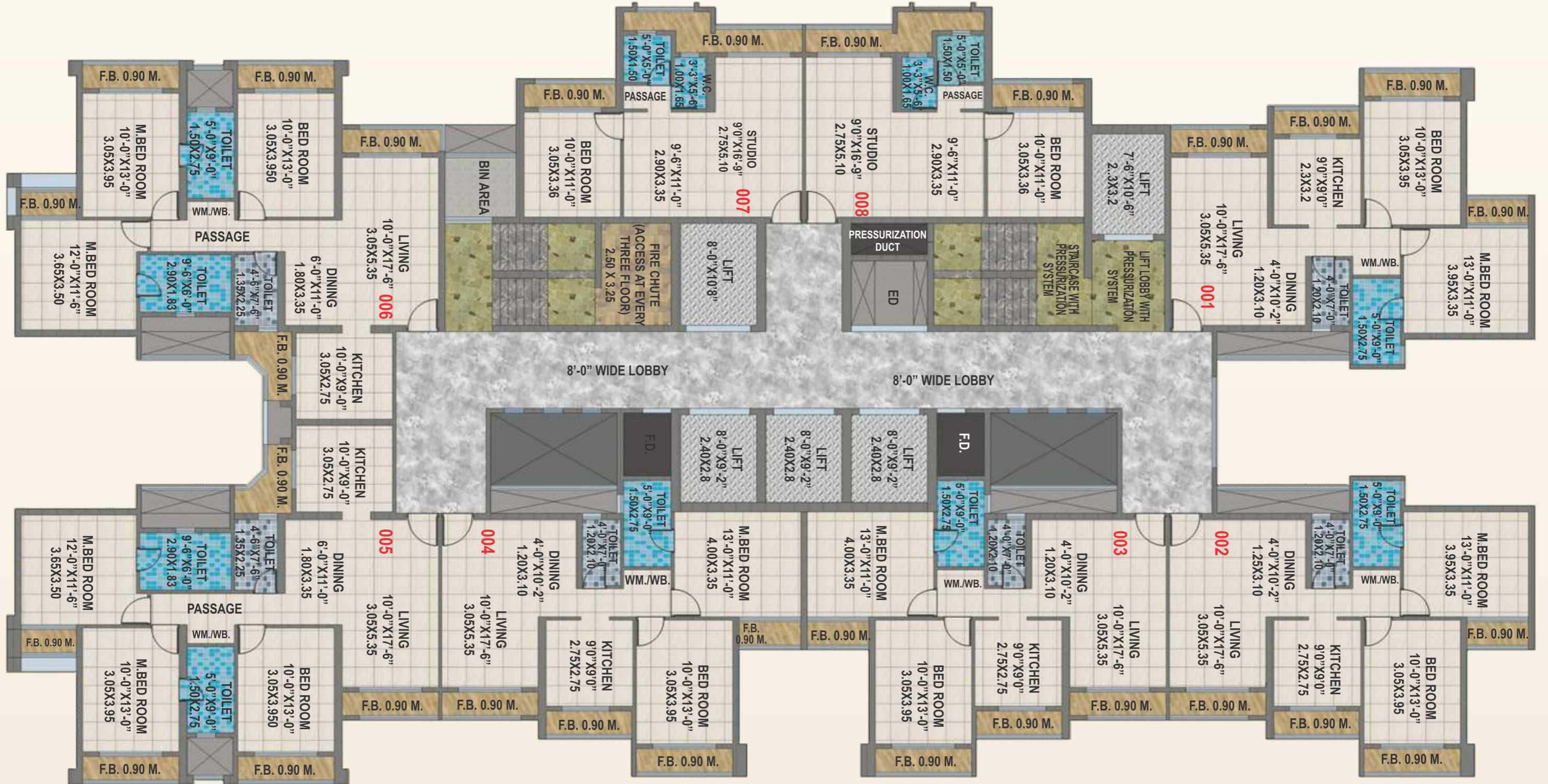
# 2 BHK UNIT PLAN

TYPE 2



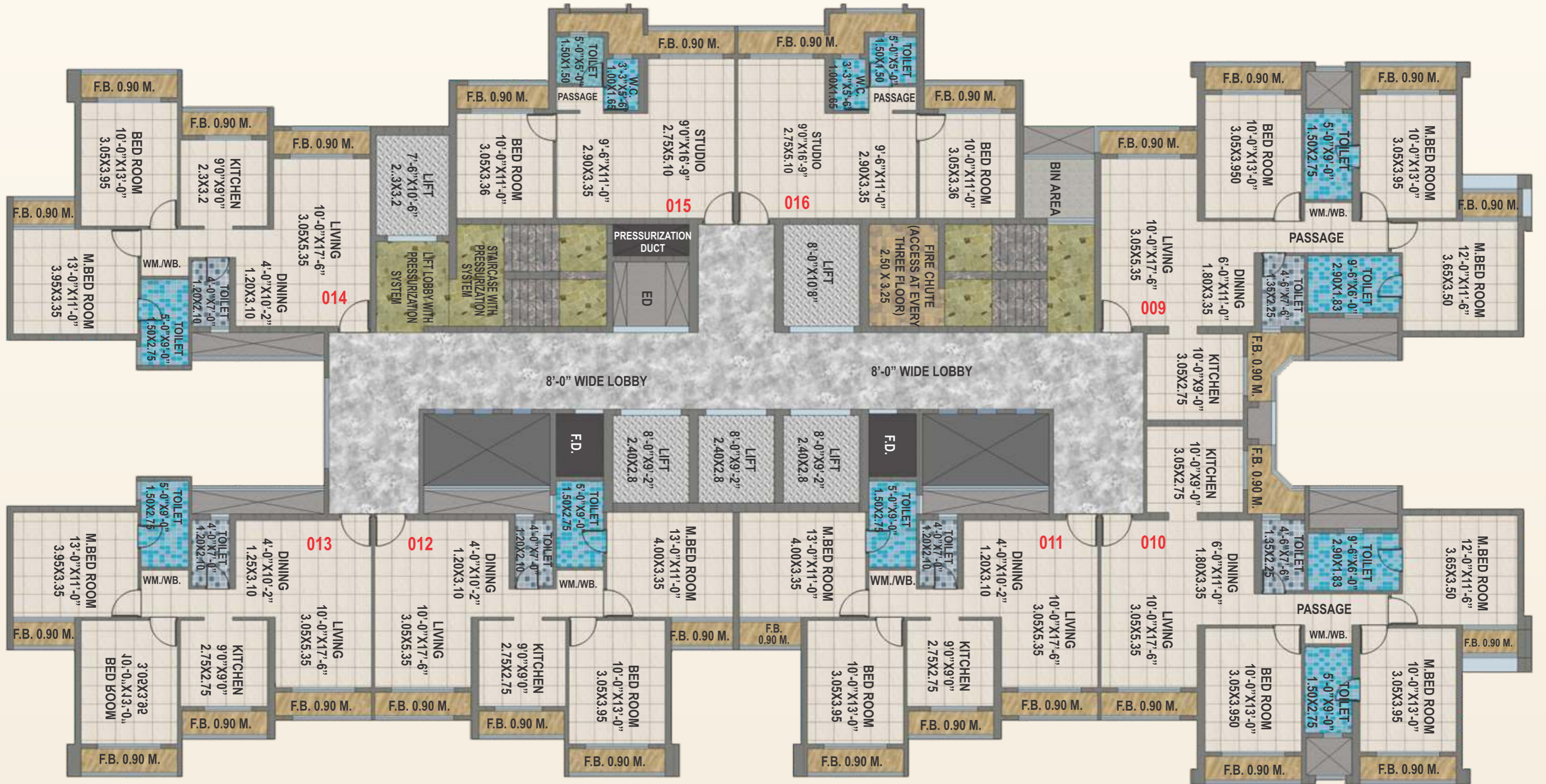
# TYPICAL FLOOR PLAN - BAZAR 1

53 STOREY



# TYPICAL FLOOR PLAN - BAZAR 2

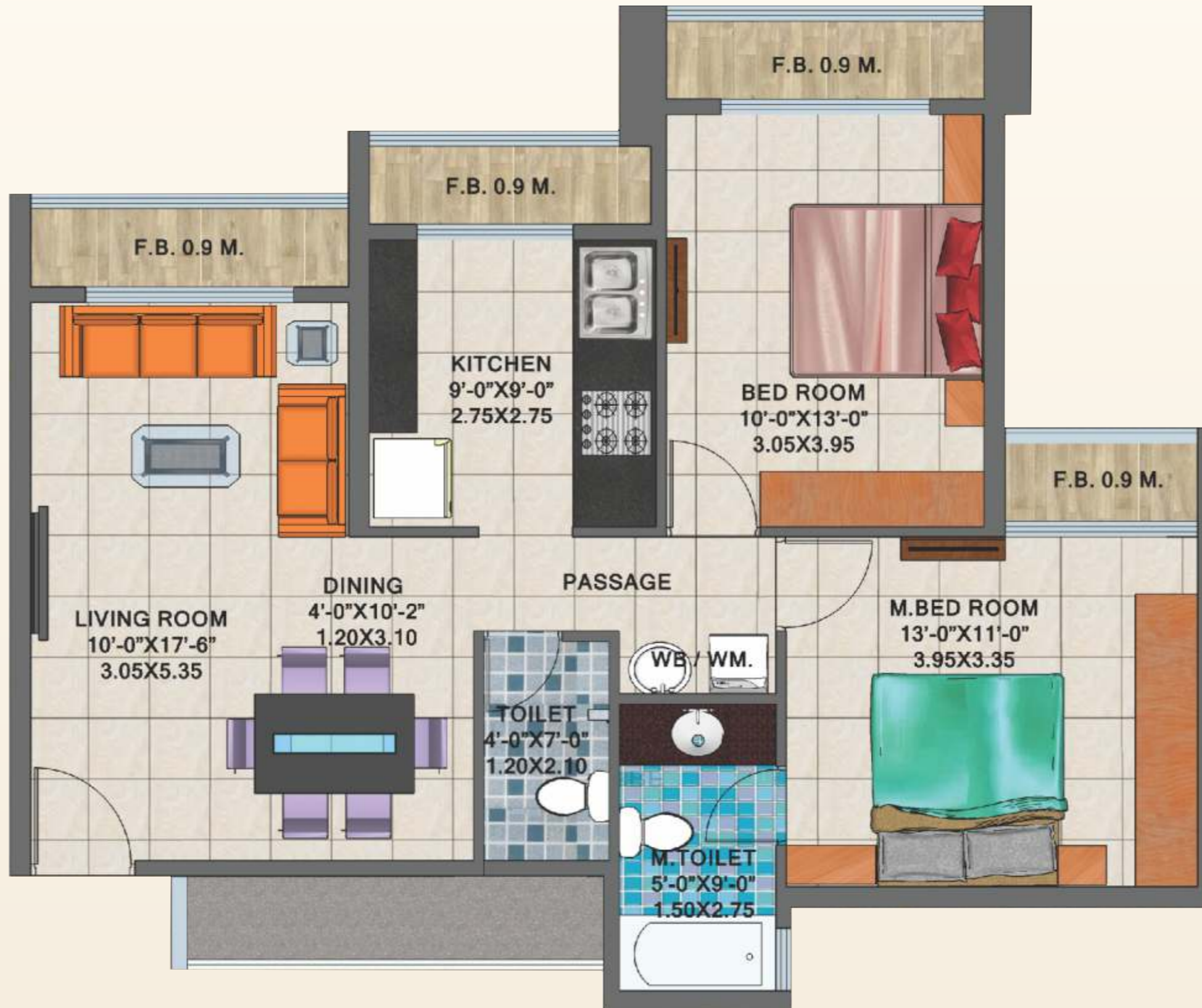
53 STOREY



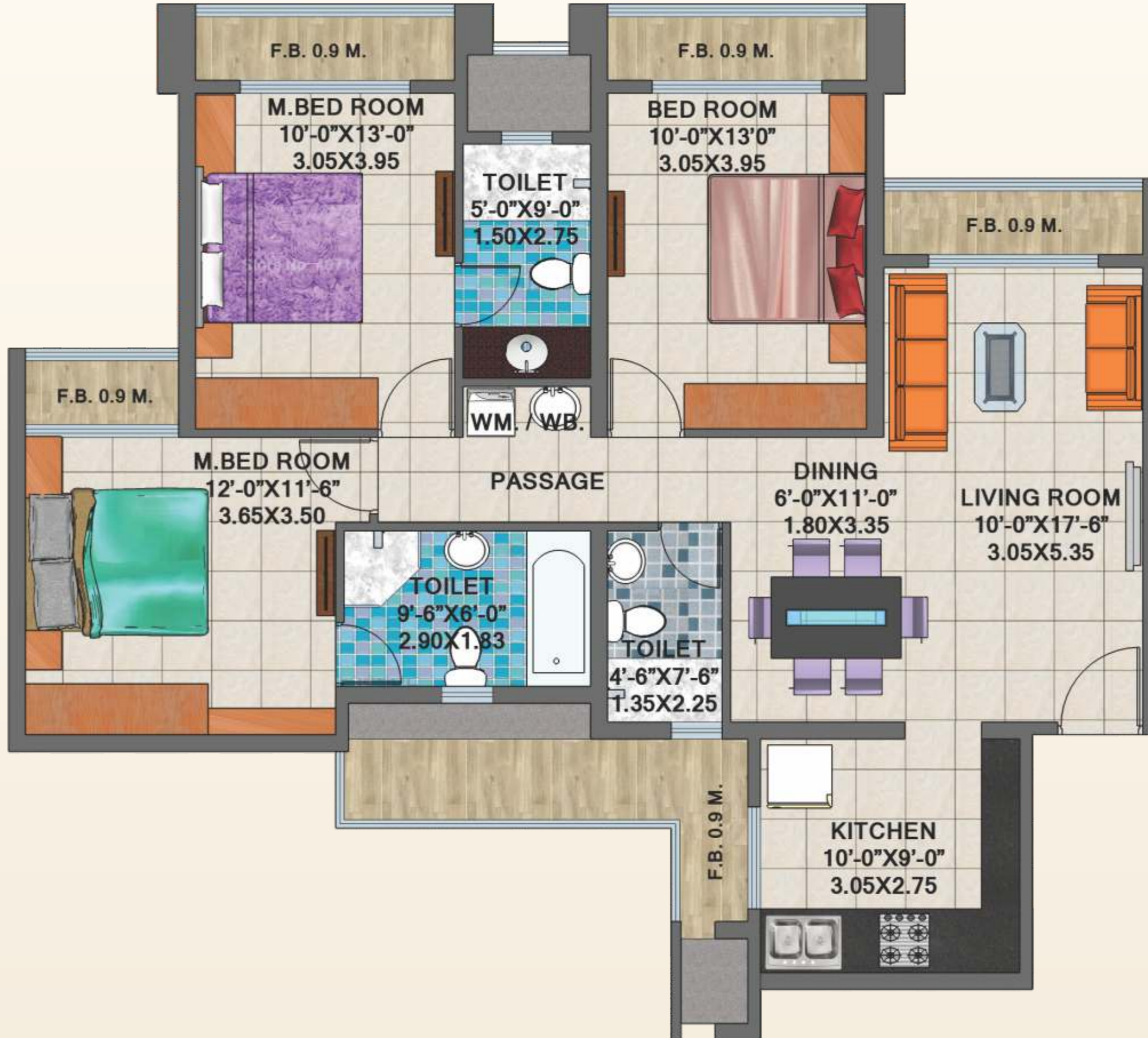
# STUDIO UNIT PLAN



## 2 BHK UNIT PLAN

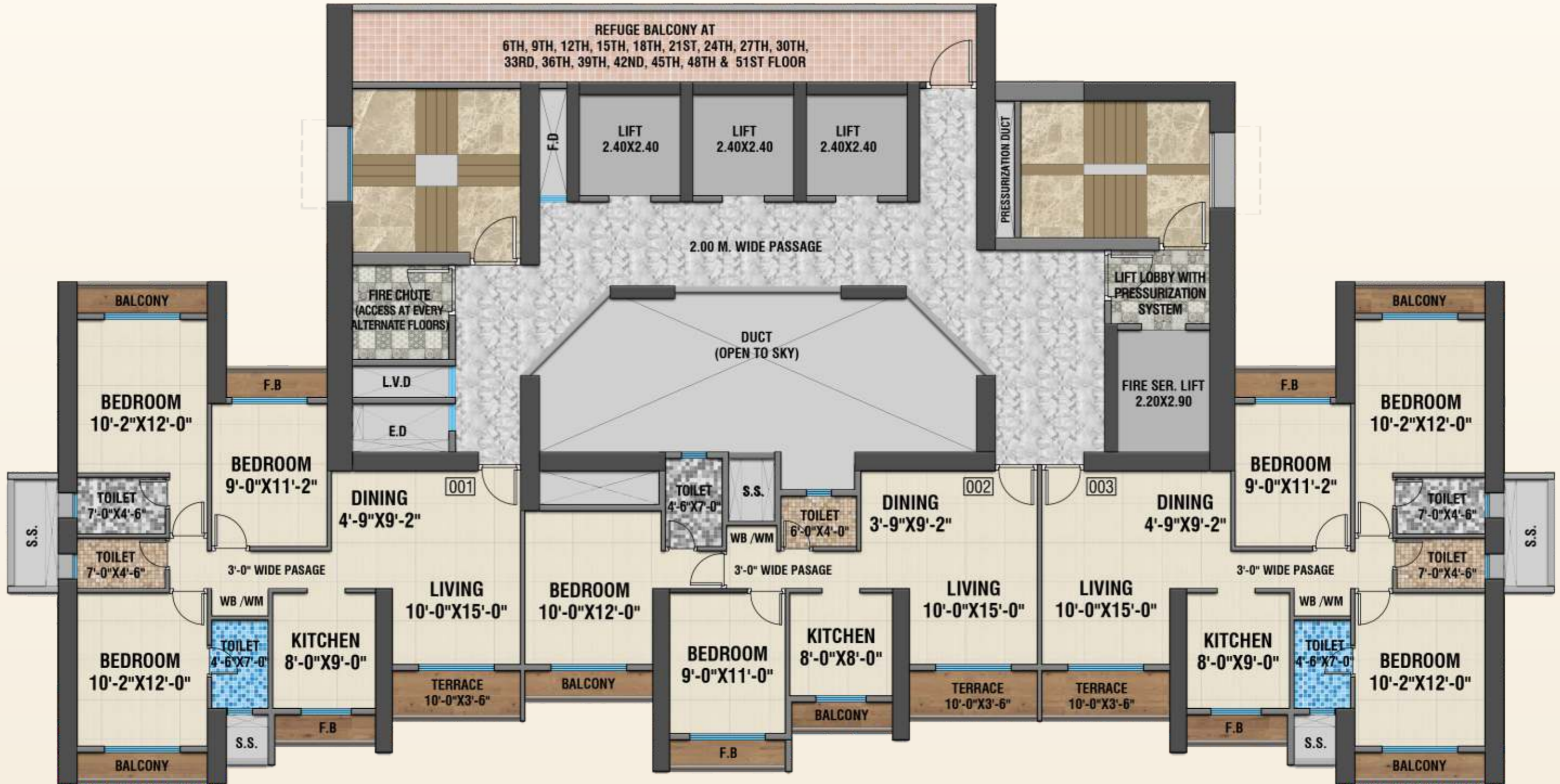


# 3 BHK UNIT PLAN

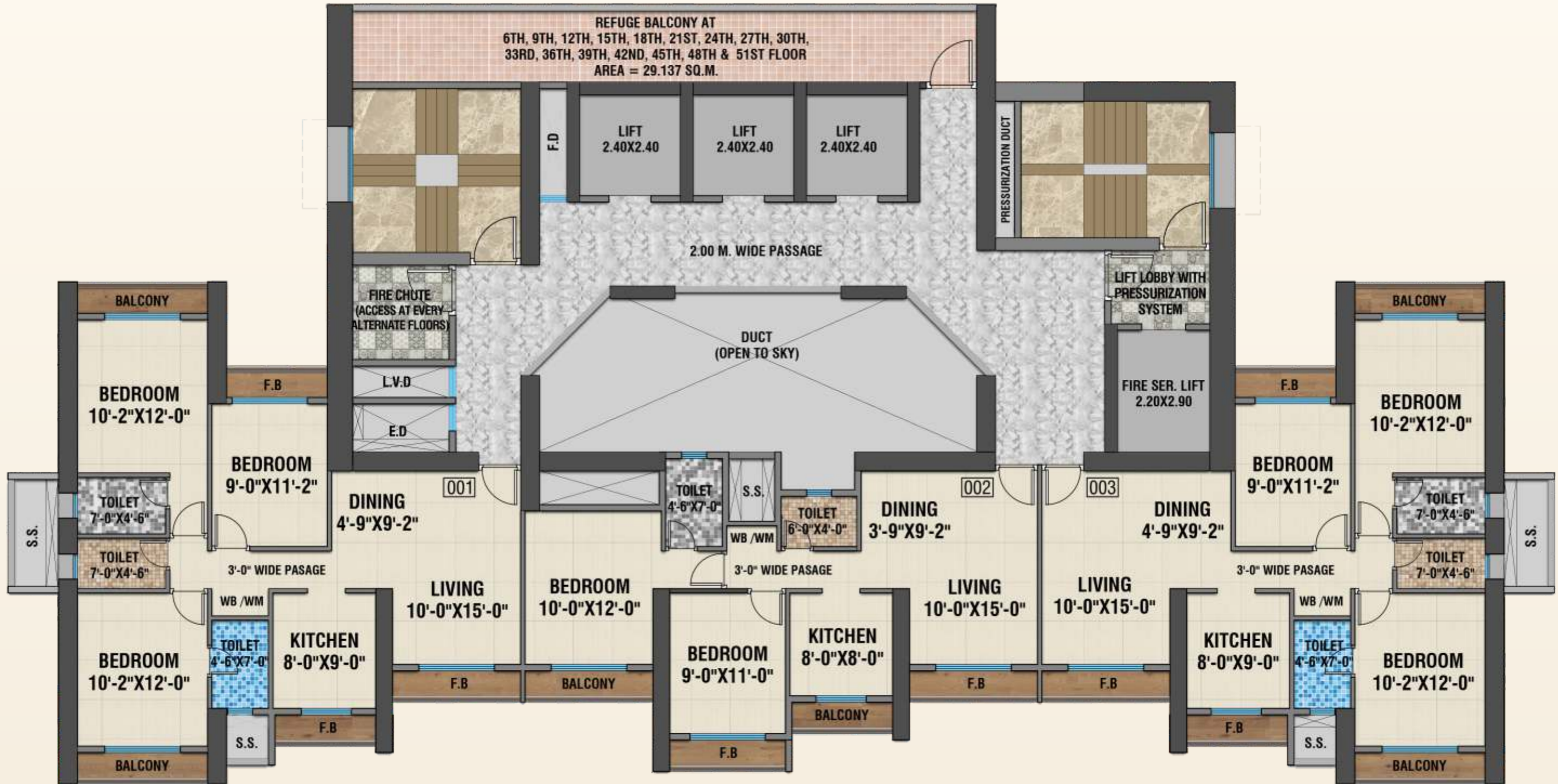


# TYPICAL FLOOR PLAN - ZEENAT (EVEN FLOORS)

51 STOREY



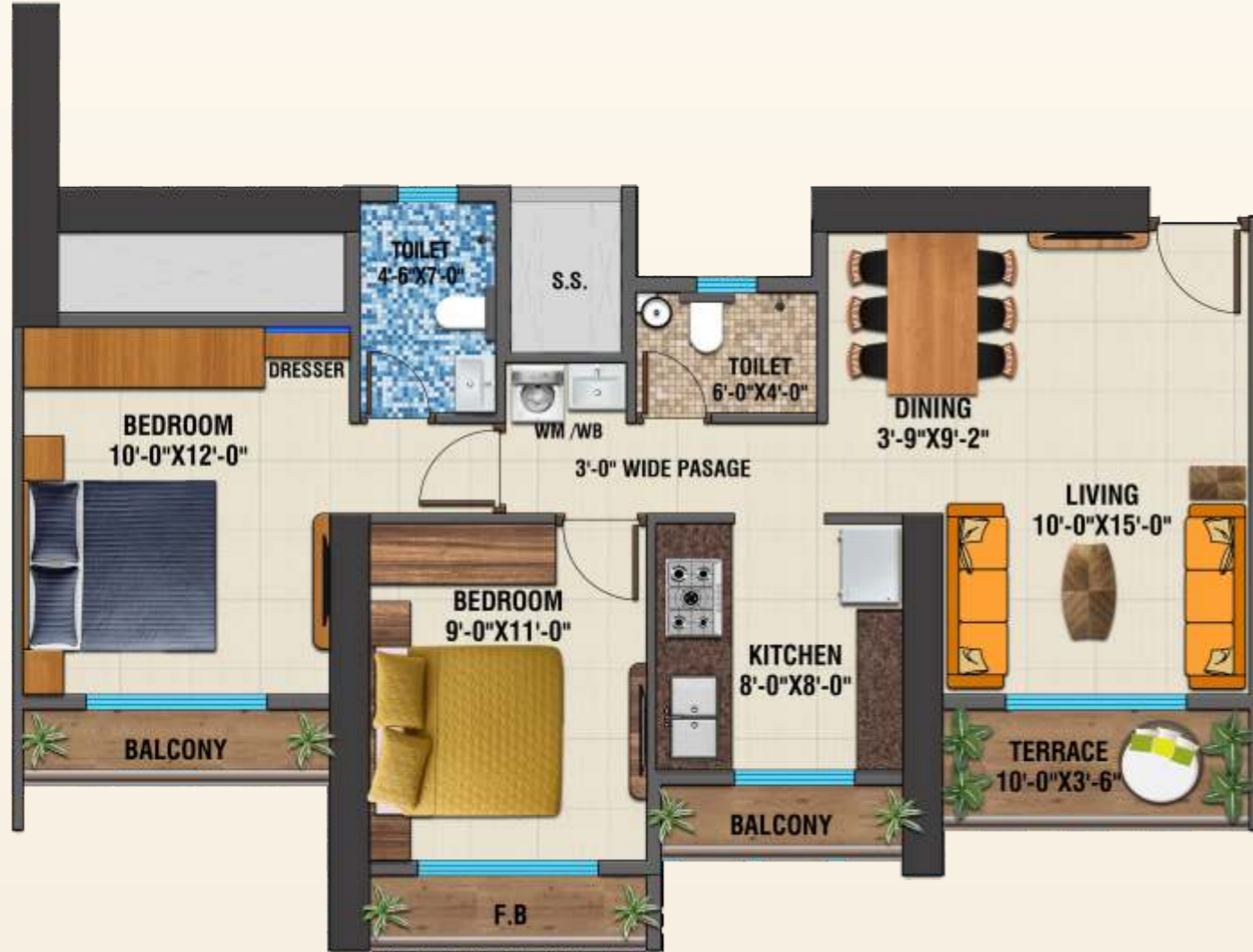
# TYPICAL FLOOR PLAN - ZEENAT (ODD FLOORS)





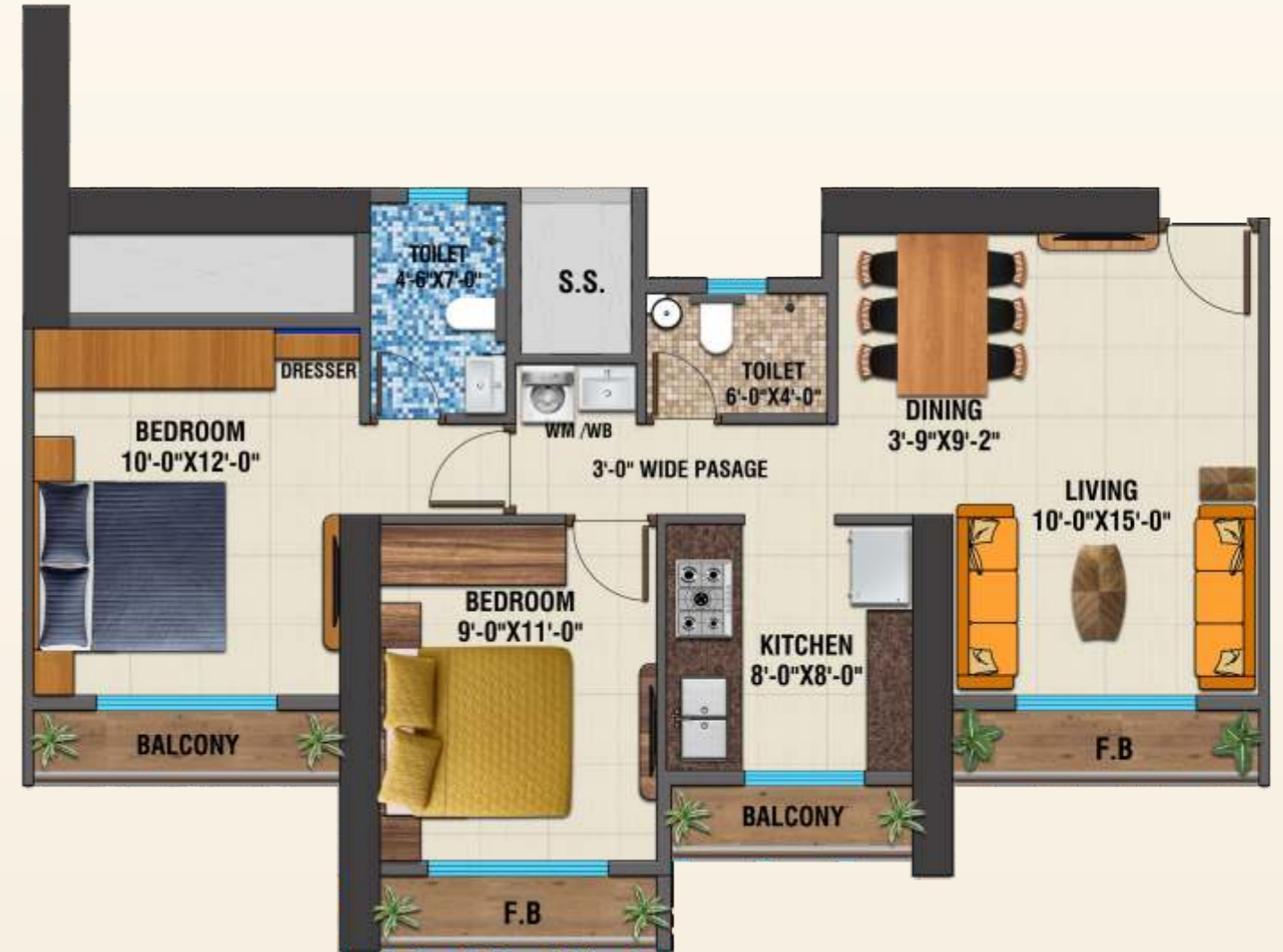
## 2 BHK UNIT PLAN TYPE 1

EVEN FLOORS



## 2 BHK UNIT PLAN TYPE 2

ODD FLOORS



### 3 BHK UNIT PLAN TYPE 1

EVEN FLOORS



### 3 BHK UNIT PLAN TYPE 2

ODD FLOORS

